



LEADERSHIP FOR RESILIENCE: Creating Sustainable Results in Healthcare

The *Leadership for Resilience* program will address the challenge of a nursing shortage in Colorado using an interdisciplinary team approach.

LEADERSHIP FOR RESILIENCE: Creating Sustainable Results in Healthcare

The teams span many types of organizations, each facing unique challenges in nursing retention. Each team will be composed of five people who bring distinctive perspectives, experiences, and expertise, and will work together to design their own novel projects focusing on nursing retention in their own organizations.



*Beautiful,
warm holiday
surroundings*



Getting Started...





A
*Beautiful
Setting ~*



Table discussions ~



Opportunities to hear different ideas and points-of-view

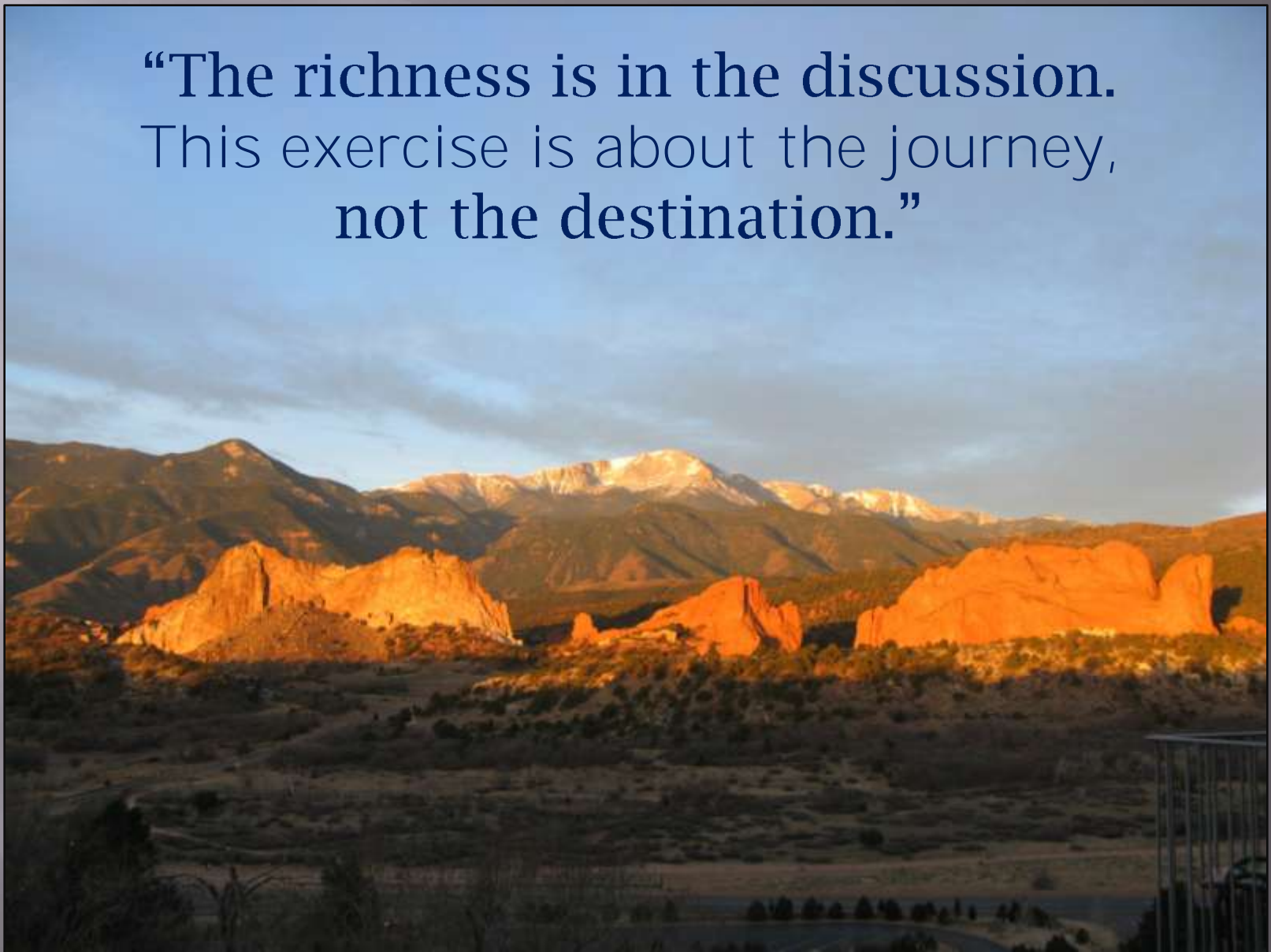
“I actually enjoyed learning about other people’s perspectives.”



“You can take these same words and they mean something different to each of us.”



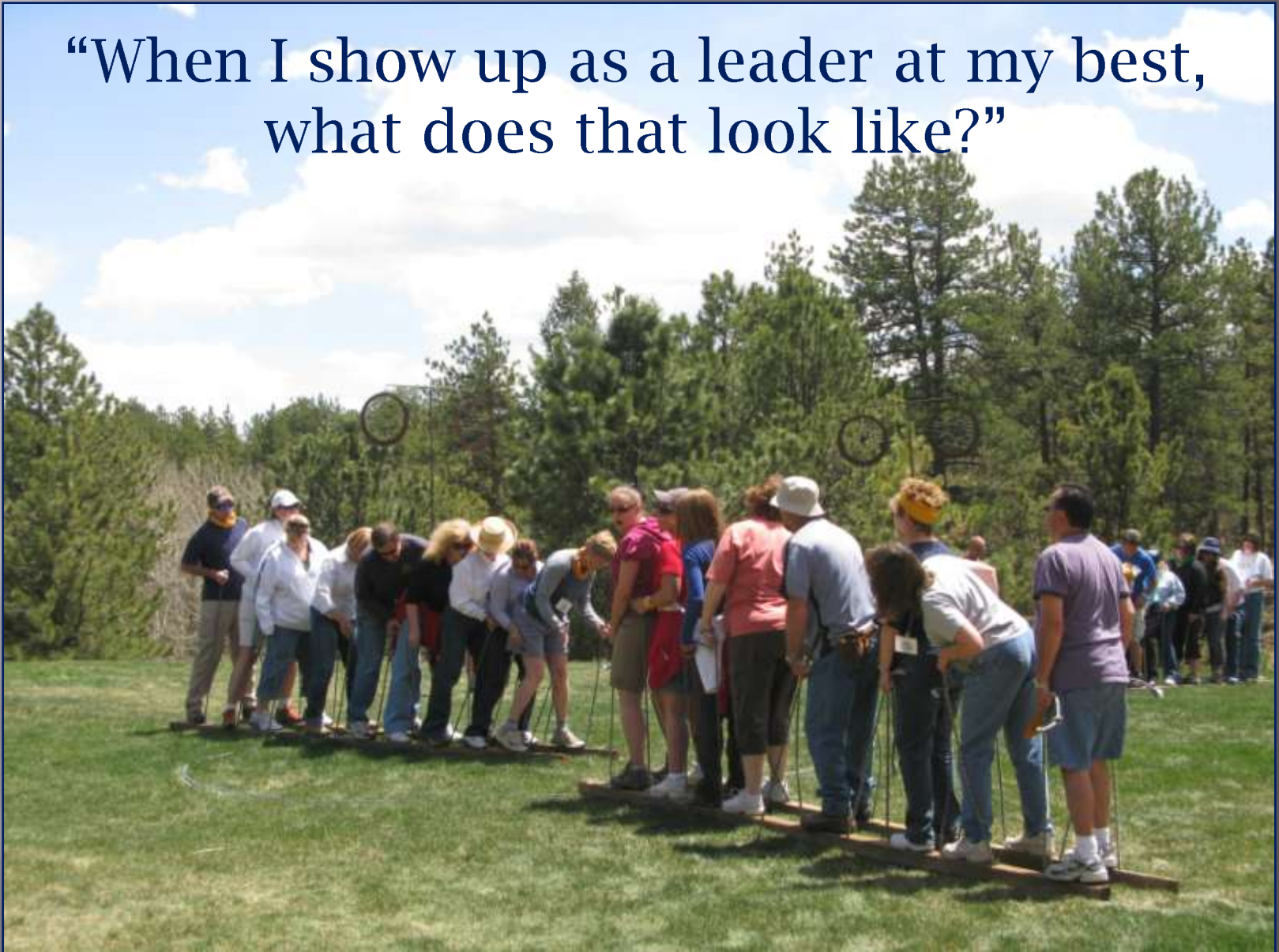
**“The richness is in the discussion.
This exercise is about the journey,
not the destination.”**



The Nature Place, Florissant, CO May 11-13, 2009



“When I show up as a leader at my best,
what does that look like?”





Support at the ready



“How different the risk is when you have support.”





“I learned that my determination is stronger than my fear.”

“I’m going home a whole different person.”



The Stanley Hotel, Estes Park, CO August 10-12, 2009



Table discussions continue



Let the building begin!



“There is no creative tension in the absence of a vision.”



Pitfalls & Possibilities



**“You get
more of
whatever
you pay
attention
to.”**



Devil's Thumb Ranch, Tabernash, CO November 18-20, 2009



The beginning of the end...



Lessons Learned Team Presentations



Lessons Learned Team Presentations



Lessons Learned Team Presentations



Lessons Learned Team Presentations



Lessons Learned Team Presentations



*Support for the
Leadership for Resilience
program was provided by ~*

Robert Wood Johnson Foundation/
Northwest Health Foundation
Partners in Investing in Nursing's Future (PIN)
Initiative

and

The Colorado Health Foundation



Regional Institute for Health & Environmental Leadership

2211 S. Josephine St.
Denver, CO 80208
303.871.2098

www.rihel.org

Developing, Connecting, and Leveraging People